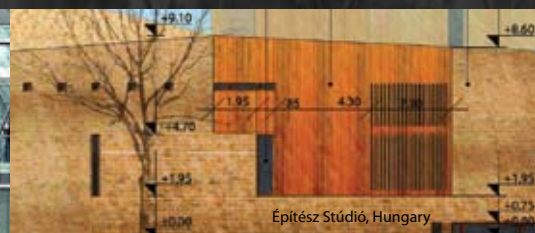


ACCELERATING THE DESIGN EXPERIENCE

GRAPHISOFT® **ARCHICAD 12** a Virtual Building Solution

ArchiCAD 12 accelerates its position as the most complete and flexible design solution in the BIM category. ArchiCAD 12 focuses on speed, design and documentation by introducing capabilities including multi-processor support, a new Curtain Wall system and the 3D Document, a first for a BIM application.



SPEED

ArchiCAD 12 is the first BIM application that takes advantage of the multi-core technology. For example, generation of sections and elevations from the Virtual Building Model can experience a dramatic performance increase on multi-processor computers.

DESIGN

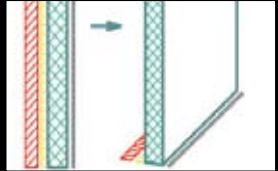
Curtain wall, partial structure display and hotlink management capabilities help speed up design and improve overall coordination on projects both internally and externally.

DOCUMENTATION

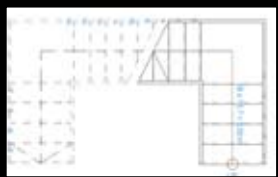
2D and 3D documentation enhancements such as the new Fill Management and the 3D Document, a first for a BIM application – help users win new business and explain their design intent to owners, consultants and contractors.



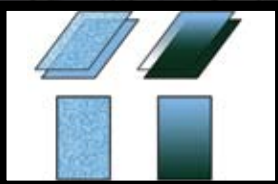
1. Speed – ArchiCAD 12 is the first application to fully exploit the benefits of today's standard multi-core processors during the most frequently used BIM modeling and documentation operations such as creating 3D views, sections and elevations as well as panning and zooming in 2D on large floor plans and layouts.



2. Curtain Wall – Enables users to easily design and document curtain wall systems. Based upon a flexible hierarchical structure of schemes, physical members and additional accessories, users can easily control & change both the entire system or the smallest detail.



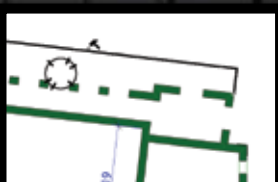
3. Partial Structure Display – Enables users to work in the information rich composite structure of walls and slabs while being able to easily coordinate the load-bearing structure with engineers.



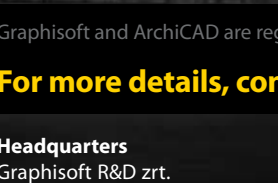
4. Hotlink Module Management – Management & visualization of the whole Hotlink structure and recursive updates of nested Hotlinks provides reduced file size and increased update speed. Users will benefit from greater productivity and better coordination when using Hotlink Modules, especially on large projects.



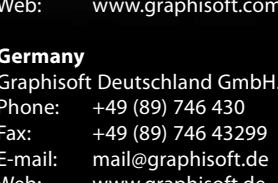
5. StairMaker Enhancements – More flexible 2D display of stairs to achieve higher productivity in the documentation and also new 2D stair symbols to comply with the local documentation standards. Four new stair types expand the default assortment of standard stair types in key markets.



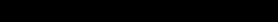
6. 3D Document – Allows users to use any 3D view of the model for creating a document where dimensions, annotations and 2D drawing elements may be added. This new level of clarity in communication helps reduce construction issues which can increase cost and lengthen project schedule.



7. Fill Enhancements – ArchiCAD 12 introduces new Fill capabilities, including translucent solid and image fills. These capabilities allow architects to remain in the ArchiCAD environment while preparing documents for competitions and client presentations.



8. "Nudge" – Users may now select any object in 2D or 3D and nudge them in a manner similar to popular office applications. These familiar features will speed the design and document generation experience.

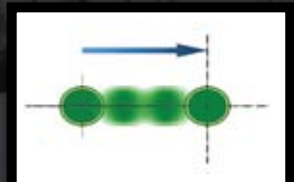
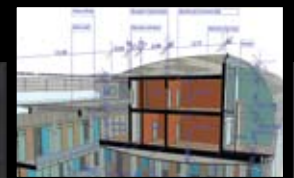
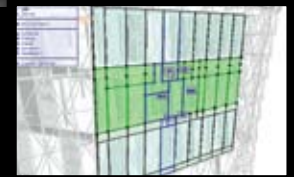


9. "Align" & "Distribute" – Users may now select any objects in 2D or 3D and align and distribute them by placing elements along a certain path or in a defined pattern. These capabilities will speed the design and document generation experience.

10. DWG 2008 Import Export – New capabilities include ACIS import, purge unused attributes and transfer all layouts into DWG model space.

11. Dimensioning Input Logic – Allows users to visualize dimension lines and adjust dimension points on the fly providing more flexibility.

12. Drawing "PMK" format – This is a native ArchiCAD drawing format which provides users with a flexible workflow when the project is divided among multiple files.



Graphisoft and ArchiCAD are registered trademarks of Graphisoft. All other trademarks are property of their respective owners.

For more details, contact any Graphisoft office, or visit: www.graphisoft.com

Headquarters

Graphisoft R&D zrt.
Phone: +36 (1) 437 3000
Fax: +36 (1) 437 3099
E-mail: mail@graphisoft.hu
Web: www.graphisoft.com

Japan

Graphisoft Japan KK.
Phone: +81 (3) 55 45 3800
Fax: +81 (3) 55 45 3804
E-mail: mail@graphisoft.co.jp
Web: www.graphisoft.co.jp

Spain

Graphisoft Spain, SL.
Phone: +34 (91) 535 8750
Fax: +34 (91) 535 8751
E-mail: mail@archicad.es
Web: www.archicad.es

United Kingdom

Graphisoft UK Ltd.
Phone: +44 (1483) 263 150
Fax: +44 (1483) 263 151
E-mail: mail@graphisoft.co.uk
Web: www.graphisoft.co.uk

Germany

Graphisoft Deutschland GmbH.
Phone: +49 (89) 746 430
Fax: +49 (89) 746 43299
E-mail: mail@graphisoft.de
Web: www.graphisoft.de

Russia

Graphisoft Representative Office
Phone: +7 495 510 2503
E-mail: russia@graphisoft.com
Web: www.graphisoft.ru

South-East Asia & China

Graphisoft Representative Office
Phone: +65 65632827
Fax: +65 65632827
E-mail: asia@graphisoft.com

United States

Graphisoft U.S., Inc.
Phone: +1 (617) 485 4203
Fax: +1 (617) 485 4201
E-mail: info@graphisoft.com
Web: www.graphisoftus.com